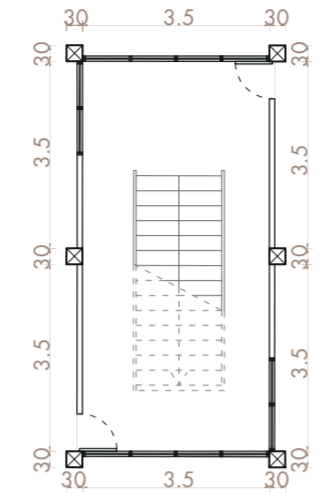
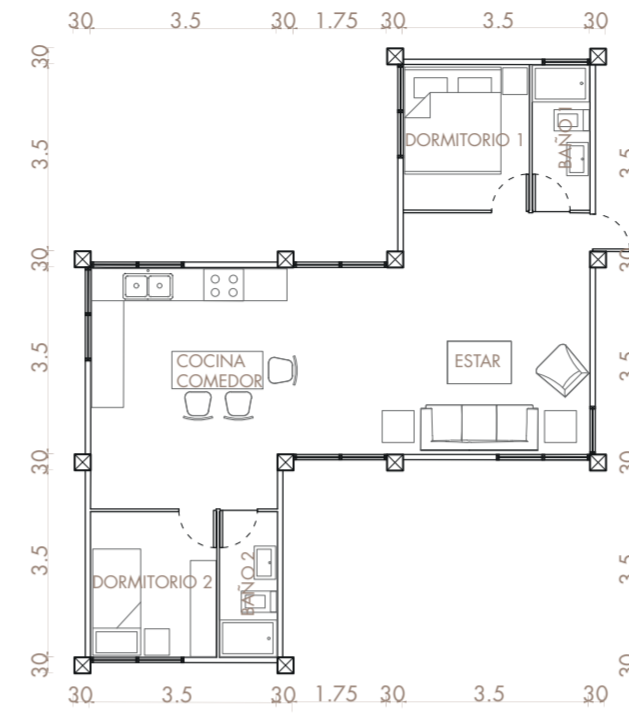


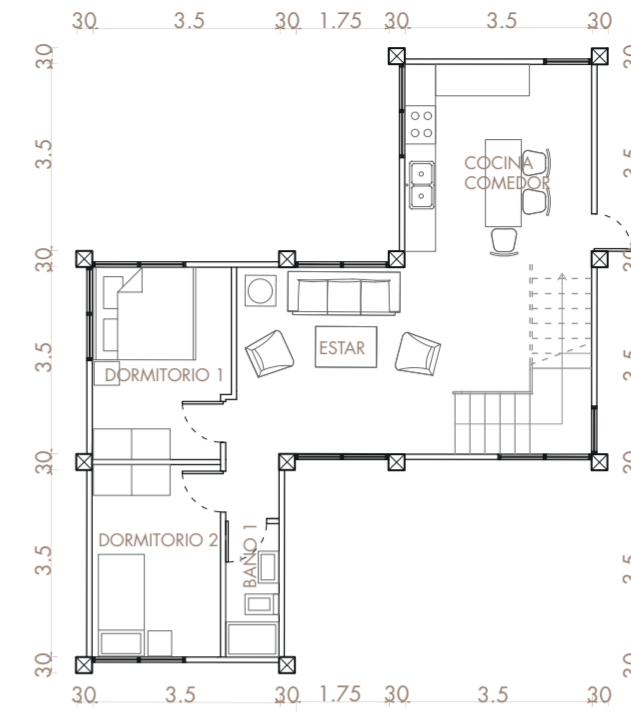
PLANTAS esc 1:100
BLOQUE DE ESCALERAS PISO 1 A 4



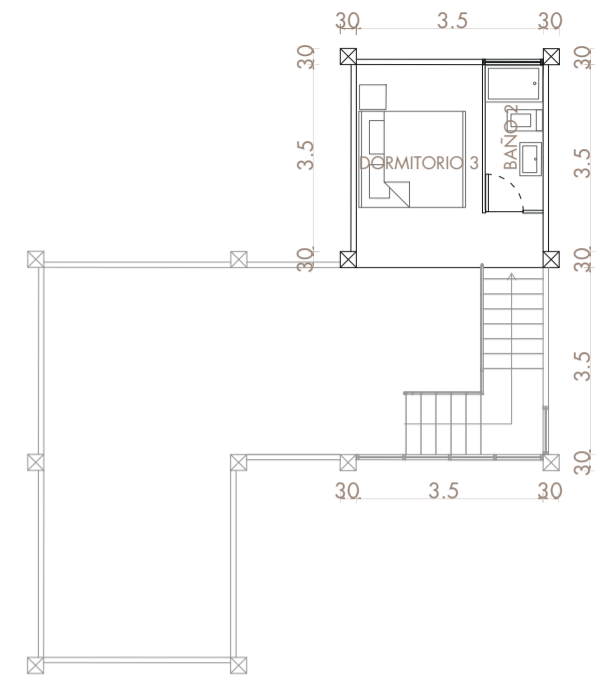
PLANTA PISO 2 y 3: HABITACIONAL



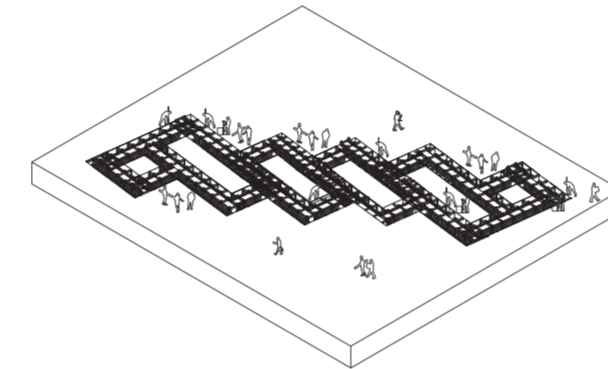
PLANTA PISO 4 DUPLEX: HABITACIONAL



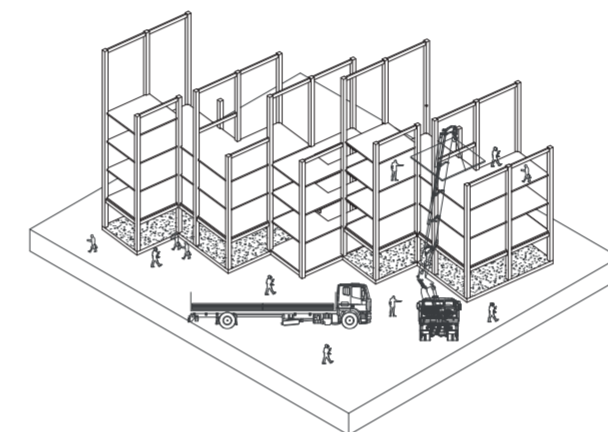
PLANTA PISO 5 DUPLEX: HABITACIONAL



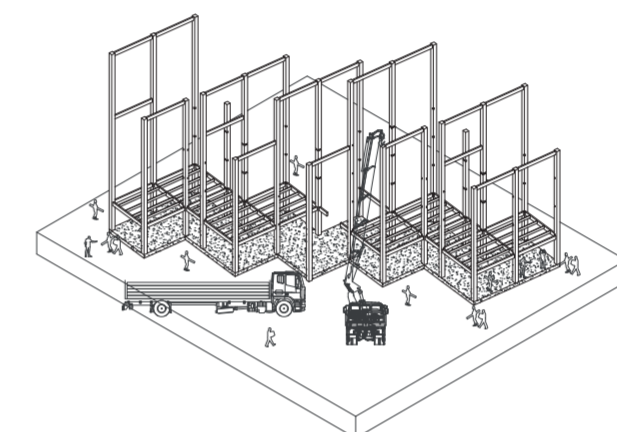
PROCESO CONSTRUCTIVO



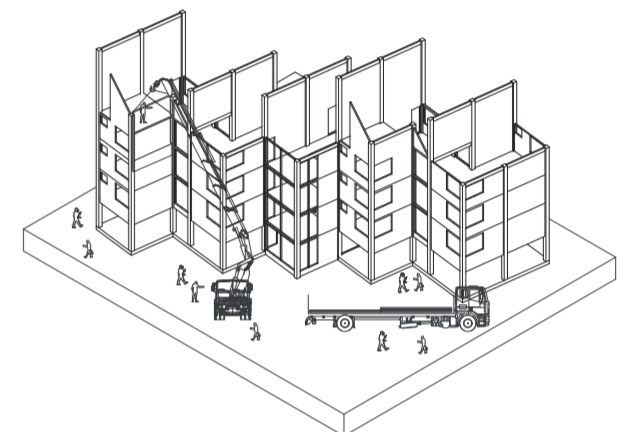
1. FUNDACIÓN CORRIDA HORMIGÓN:
-encofrado - cemento
-sobrecimiento 50x50cm
-radier 15cm



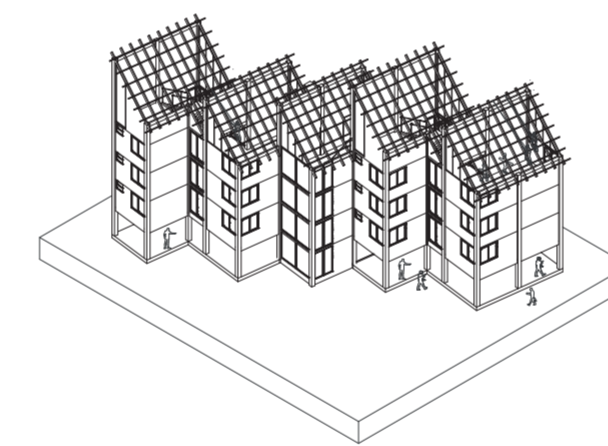
2. ESTRUCTURAL TRIDIMENSIONAL:
-pilares M.L.E 30x30x1500cm - vigas M.L.E 30x30x350cm
-vigas de piso nivel 1 madera 5.08x20.32cm
-pletinas galvanizadas 10cm unión pilar/fundación



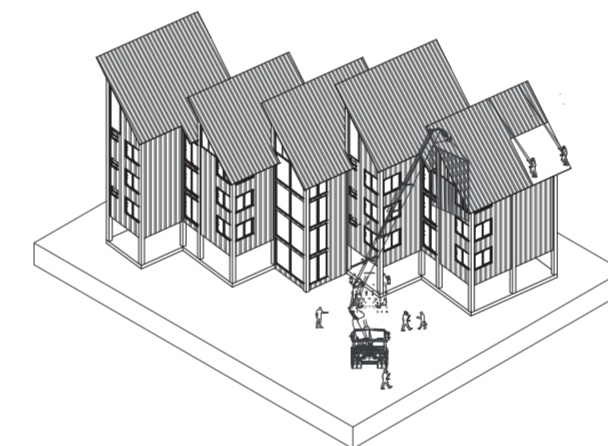
3. ESTRUCTURA DE PISO:
-panel CLT 20cm | 5 capas
-pletinas galvanizadas unión muro/piso



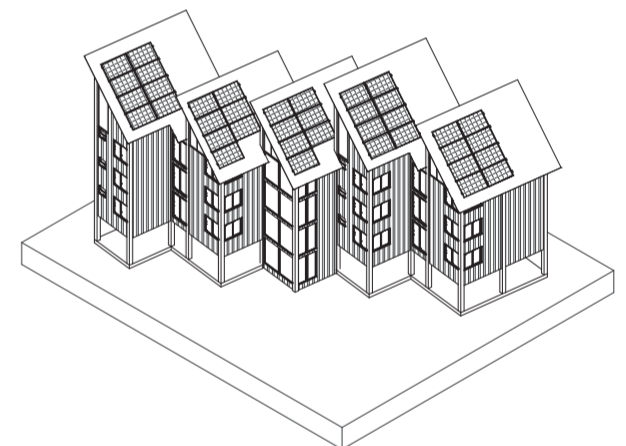
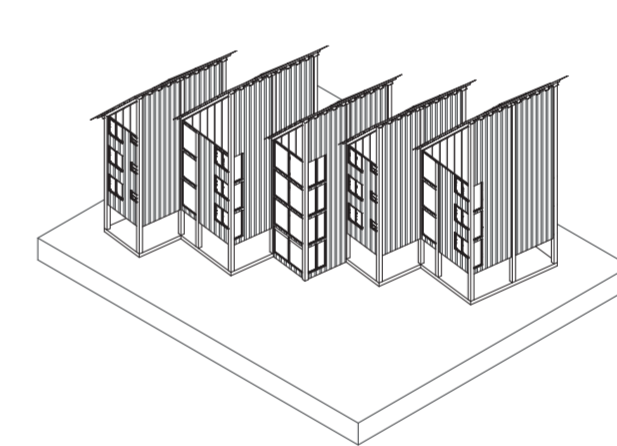
4. MONTAJE DE MUROS EXTERIORES:
-panel CLT 10cm | 3 capas



5. ESTRUCTURA DE TECHUMBRE:
-fijerales de madera 5.08x20.32cm
-plancha terciado estructural 15cm - membrana hidrofuga
-costaneras de madera 5.08x7.62cm



6. REVESTIMIENTO:
-revestimiento exterior panel aislado de acero prefabricado 15cm
-revestimiento techumbre panel aislado de acero prefabricado 15cm



PROYECTO FINALIZADO

CORTE esc 1:100

