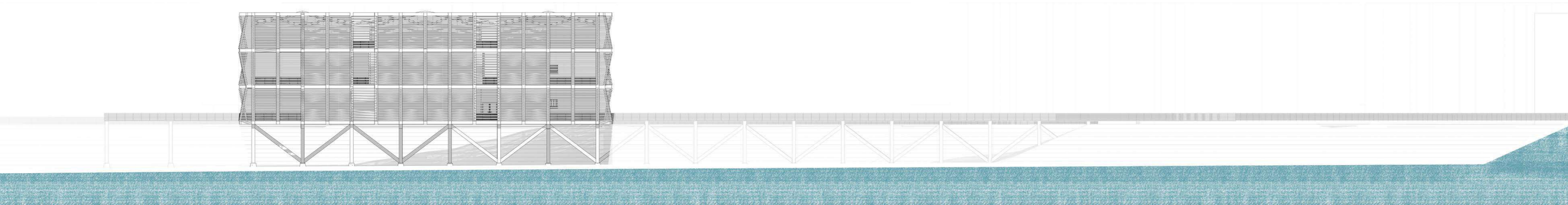
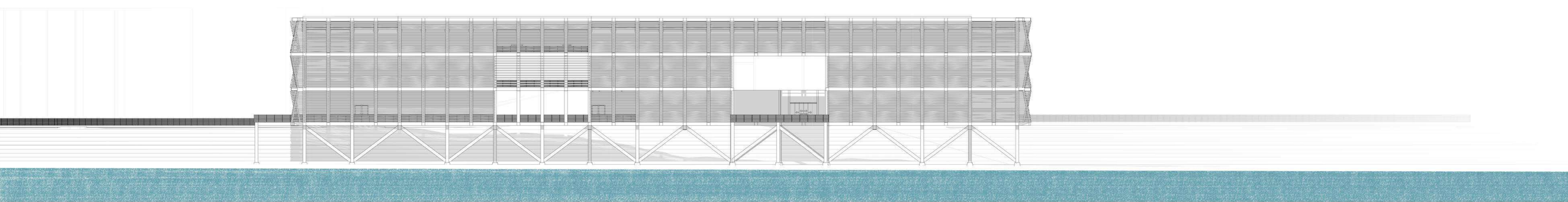


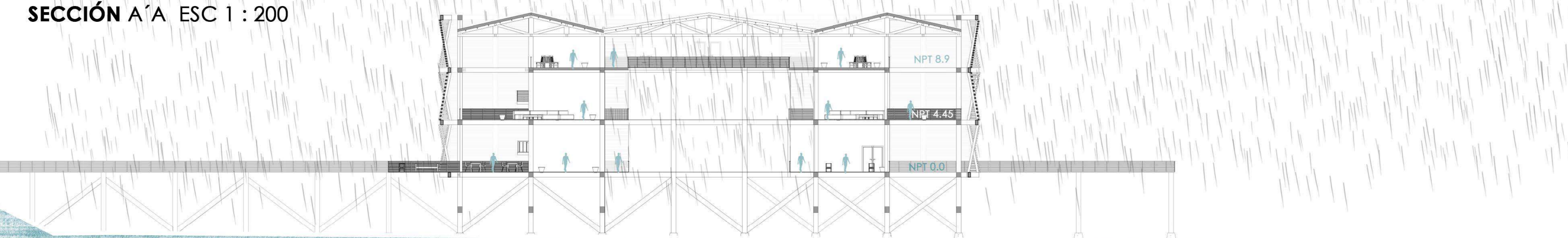
ELEVACIÓN SUR ESC 1 : 200



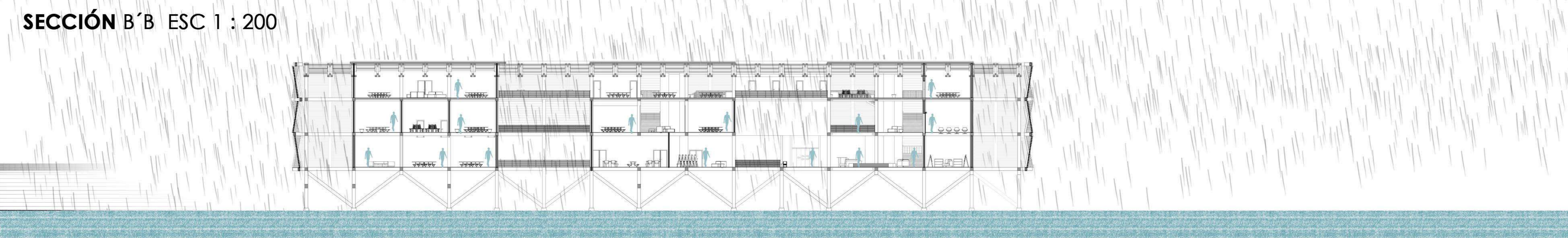
ELEVACIÓN OESTE ESC 1 : 200



SECCIÓN A'A ESC 1 : 200

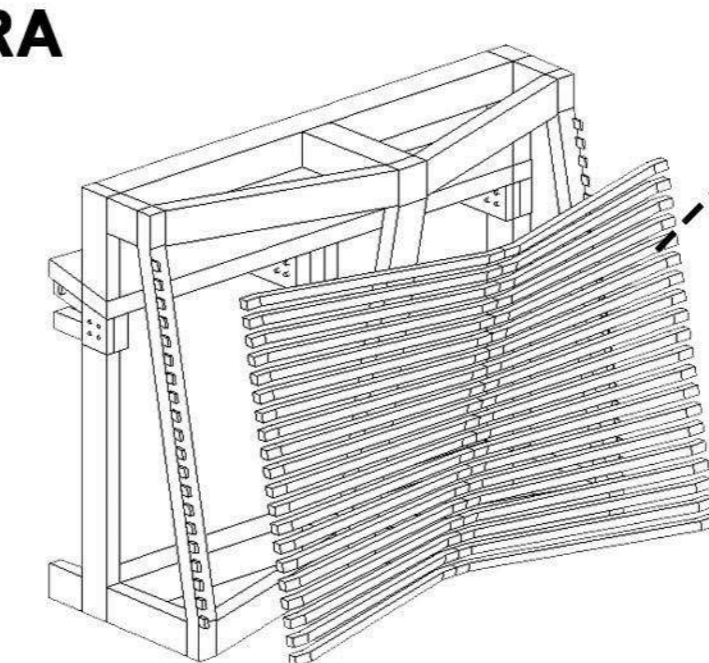


SECCIÓN B'B ESC 1 : 200

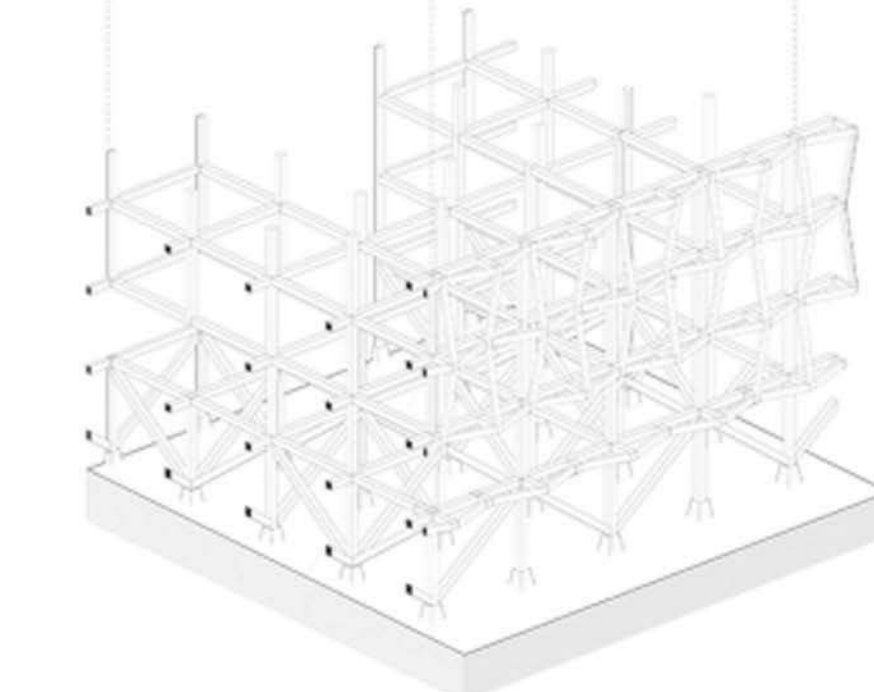
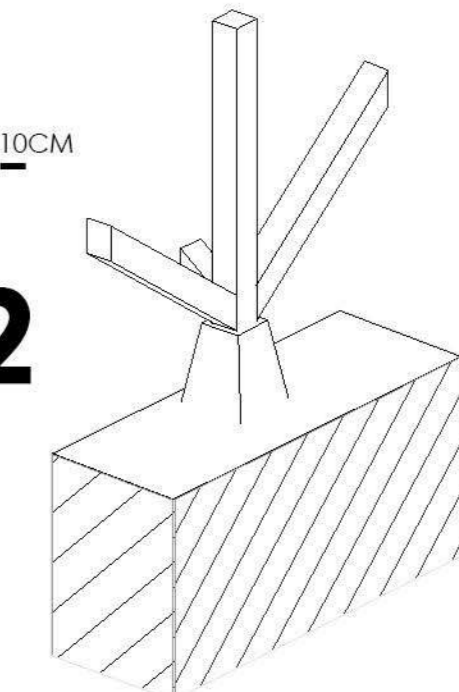


ESTRUCTURA

1



2



ESTRUCTURA RETICULAR 6X6 PERMITE FLEXIBILIDAD PROGRAMÁTICA

- CN-4 CUBIERTA
- COSTARENAS MADERA LAMINADA 10X10 CM
- CERCHIA MADERA LAMINADA 20X40CM
- PERNOS ANCLAJE S/CALCULO

- REVESTIMIENTO MACHIHembrADO 1X6"

- REVESTIMIENTO MACHIHembrADO 1X6"

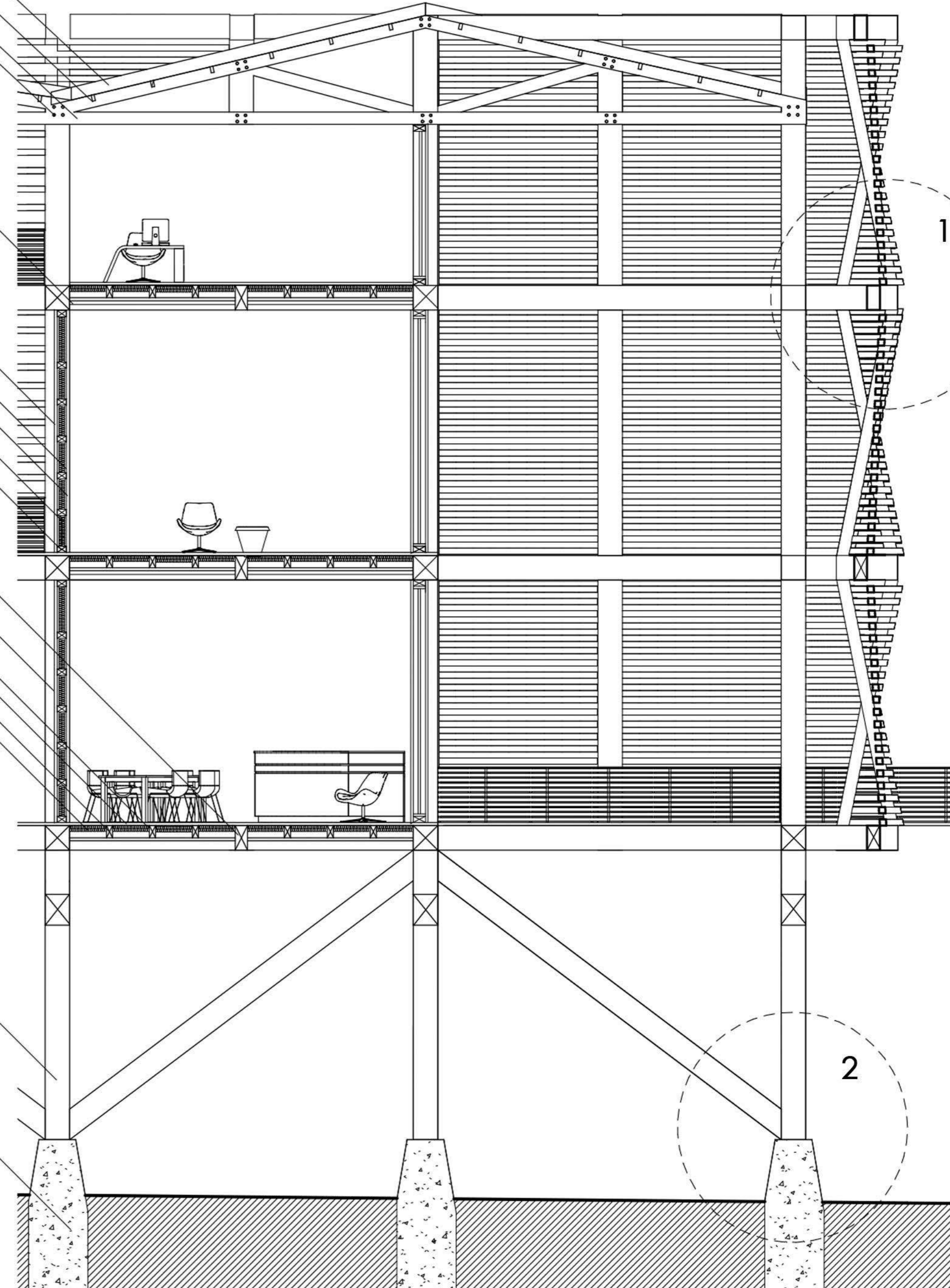
- FIELTRO ASFALTICO
- FIELTRO ASFALTICO REVESTIMIENTO MACHIHembrADO 1X6"
- SOLERA INFERIOR 2X4"

- VIGA MADRE 8X16"

- VIGAS 4X8" MADERA LAMINADA
- SUELO PINO MACHIHembrADO 1X6"
- FIELTRO ASFALTICO
- TERCIADO ESTRUCTURAL 18MM
- POLIESTIRENO EXPANDIDO 10MM

- PILAR LAMINADO 40X40CM

- PILOTE S/ CALCULO



2

1