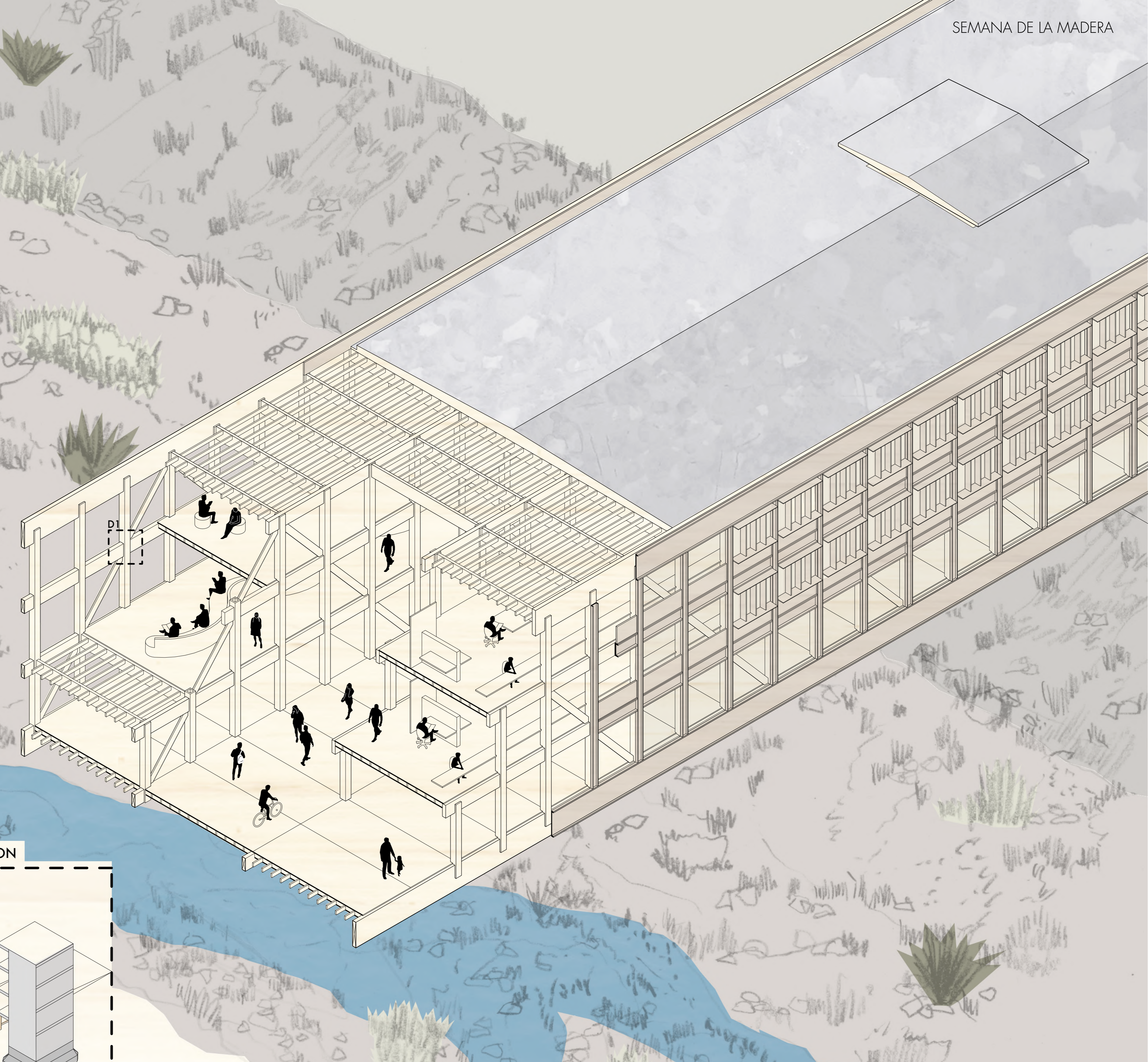
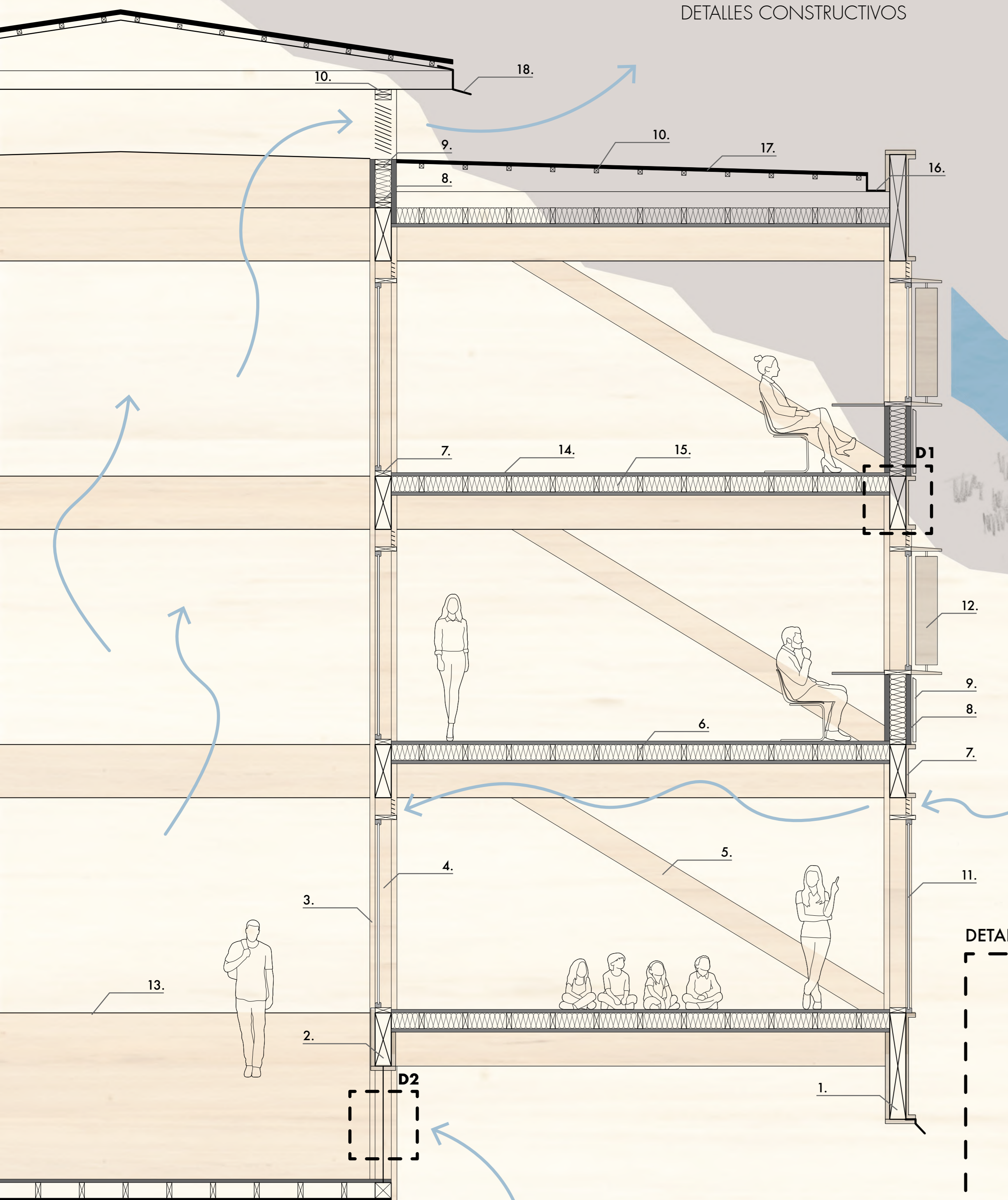


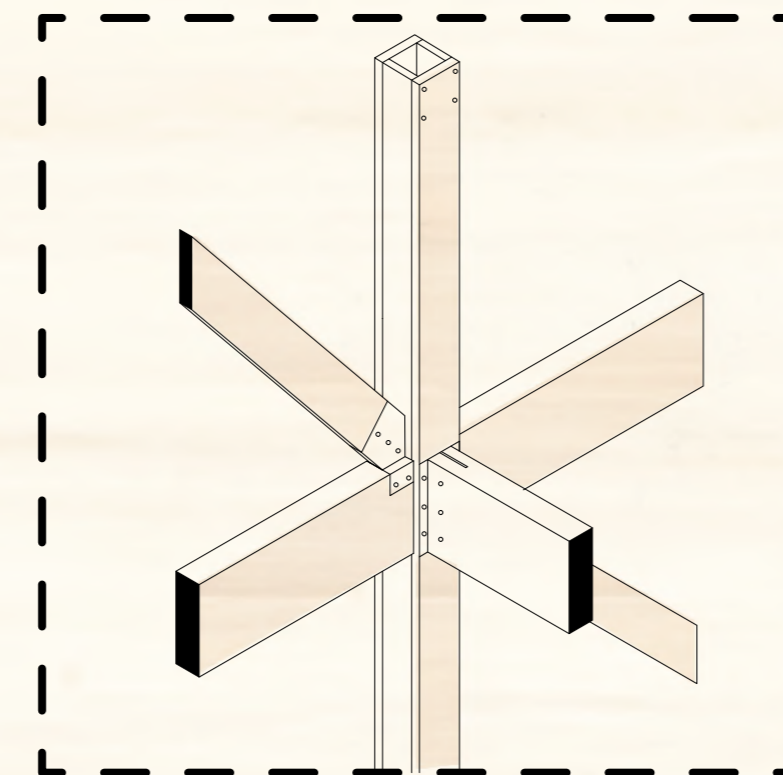
LA ESTRUCTURA

DETALLES CONSTRUCTIVOS

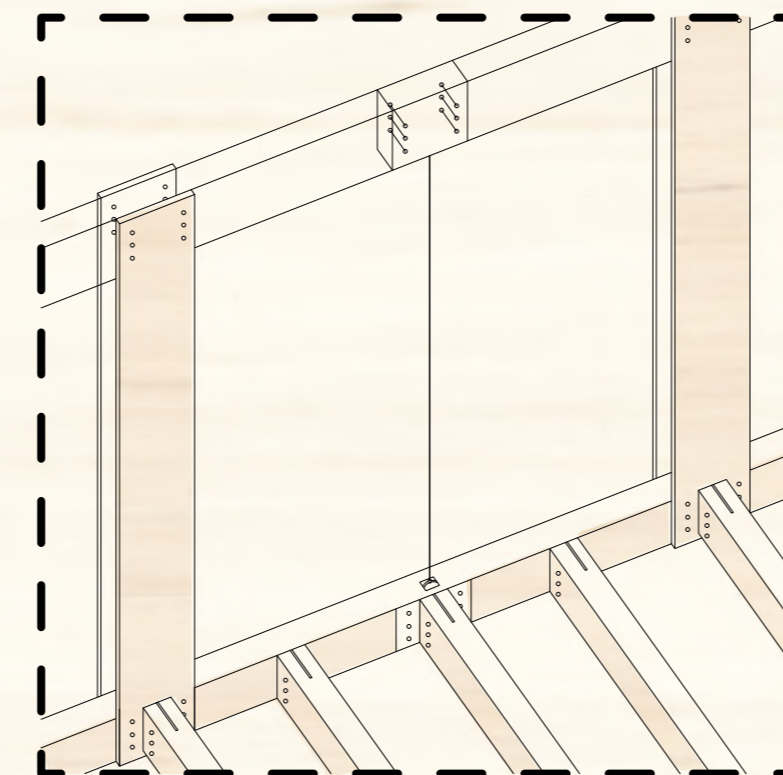
- | | | |
|-------------------------|----------------------------------|-----------------------------------|
| 1. Viga 185 x 1216 mm | 9. Solera superior | 17. Piso vinílico PVC |
| 2. Viga 185 x 608 mm | 10. Sobresolera superior | 18. Forro acústico |
| 3. Pilar 65 x 304 mm | 11. Costanera 2 x 2" | 19. Fibra mineral |
| 4. Pilar 65 x 185 mm | 12. Terciado pino 15 mm | 20. Canaleta zinc |
| 5. Riostra 65 x 304 mm | 13. Tinglado pino cepillado | 21. Plancha zinc |
| 6. Cadeneta 2 x 4" | 14. Celosía vertical 40 x 300 mm | 22. Cortagolera acero galvanizado |
| 7. Solera inferior | 15. Protección PVC | |
| 8. Sobresolera inferior | 16. Ventana termopanel PVC | |



DETALLE 1



DETALLE 2



DETALLE FUNDACION

