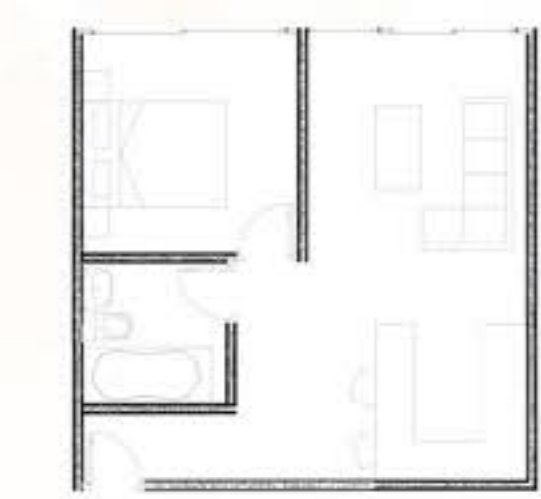


CORTE LONGITUDINAL BLOQUE 1 / ESC 1:100

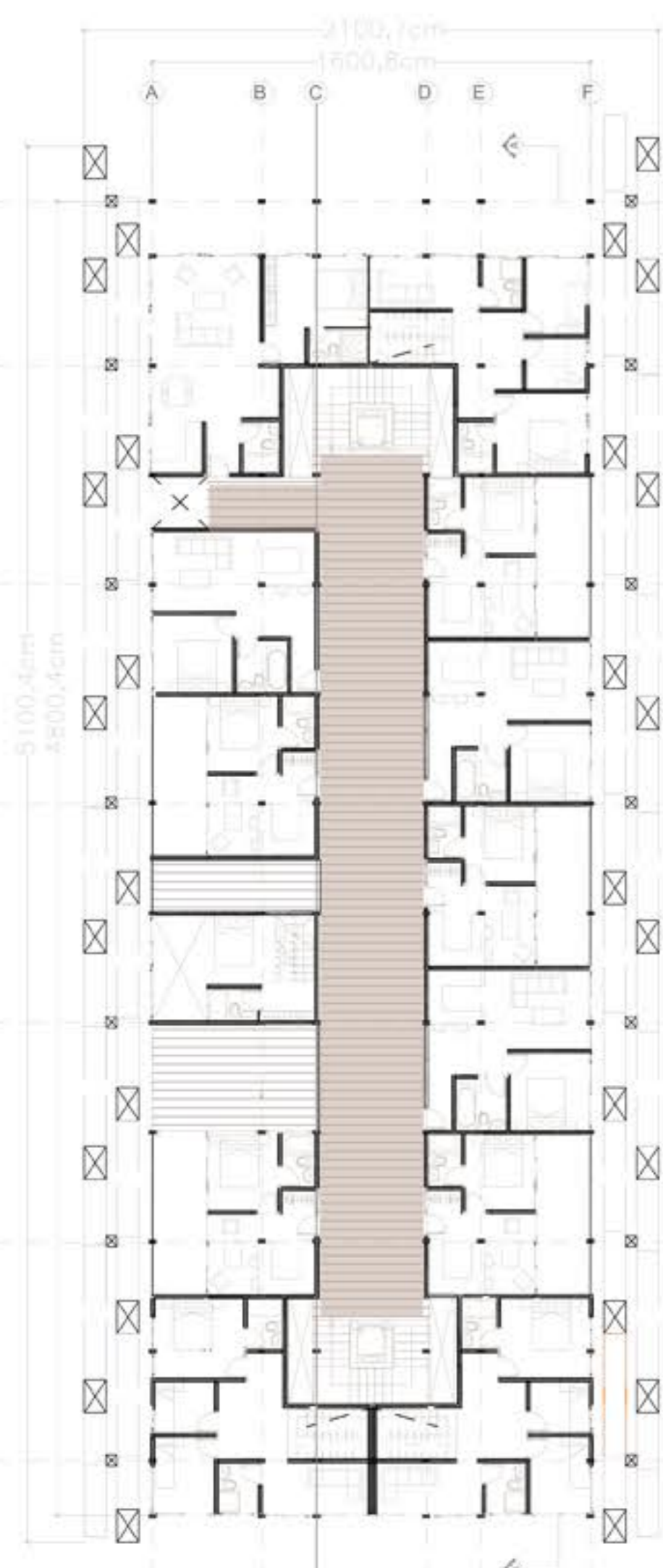


SIMPLE 1
23Mm2

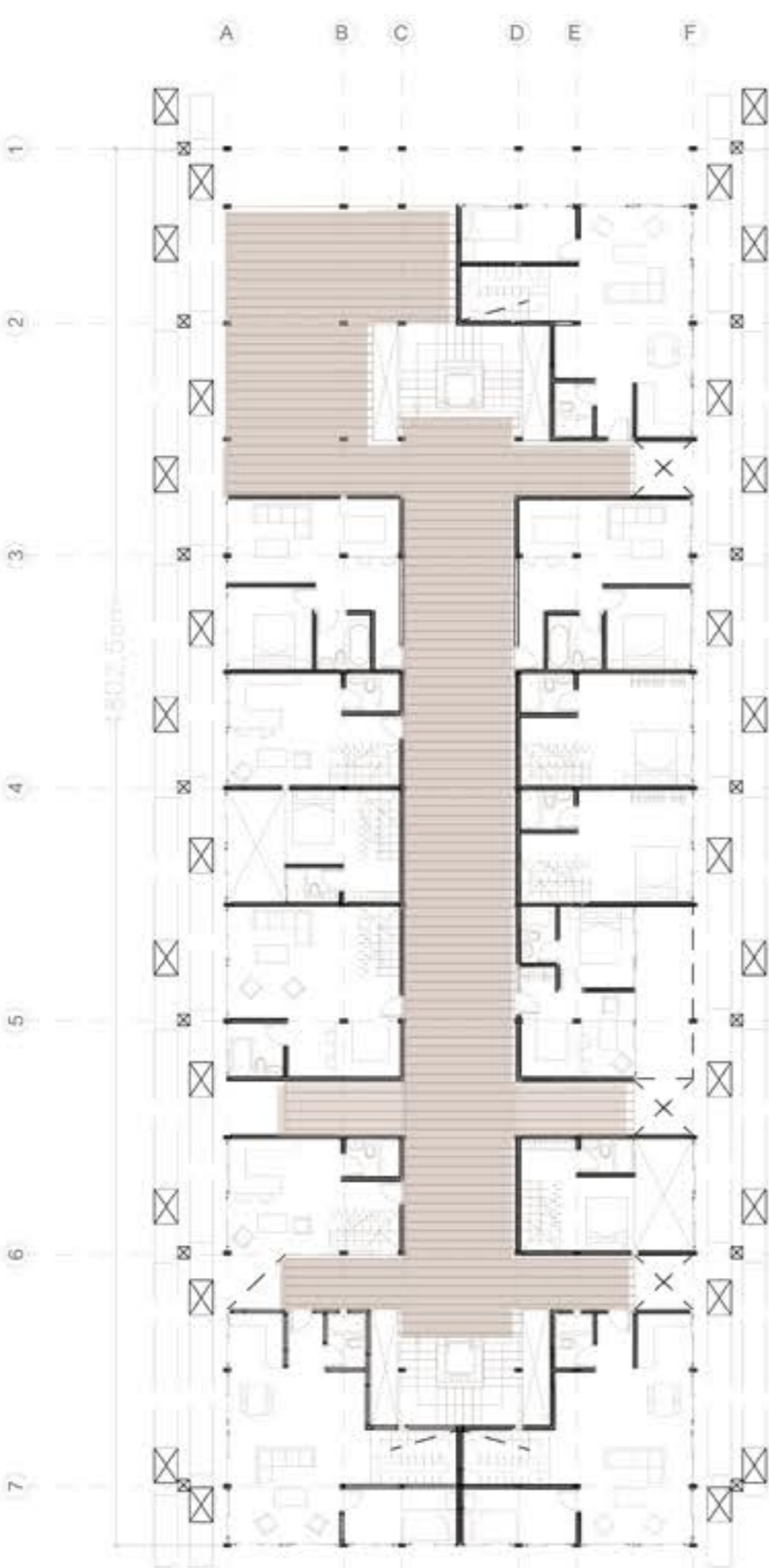


IMPLE 2
35m2

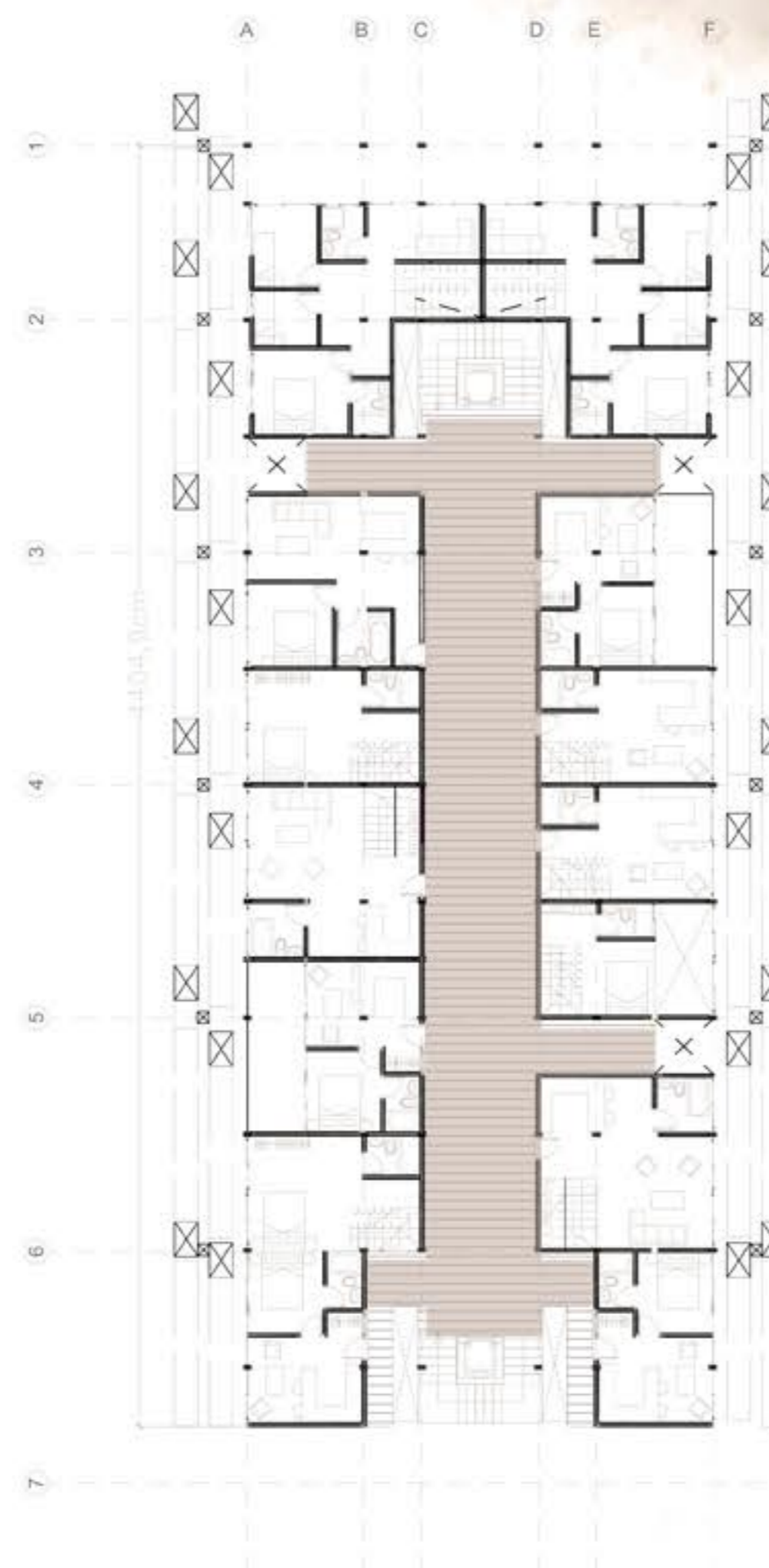
PLANIMETRIA GENERAL



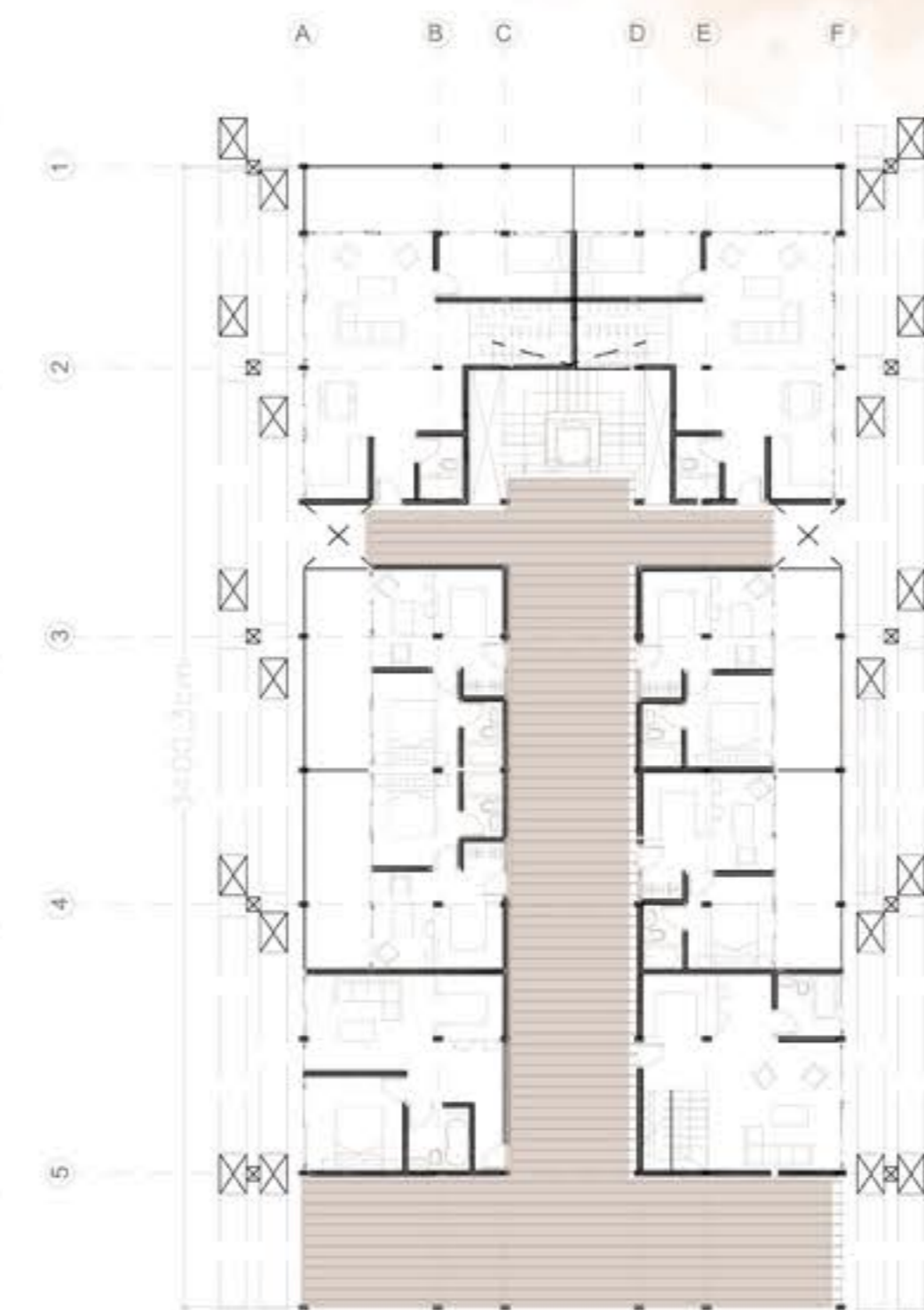
PLANTA 6TO PISO / BLOQUE 1
esc 1:200



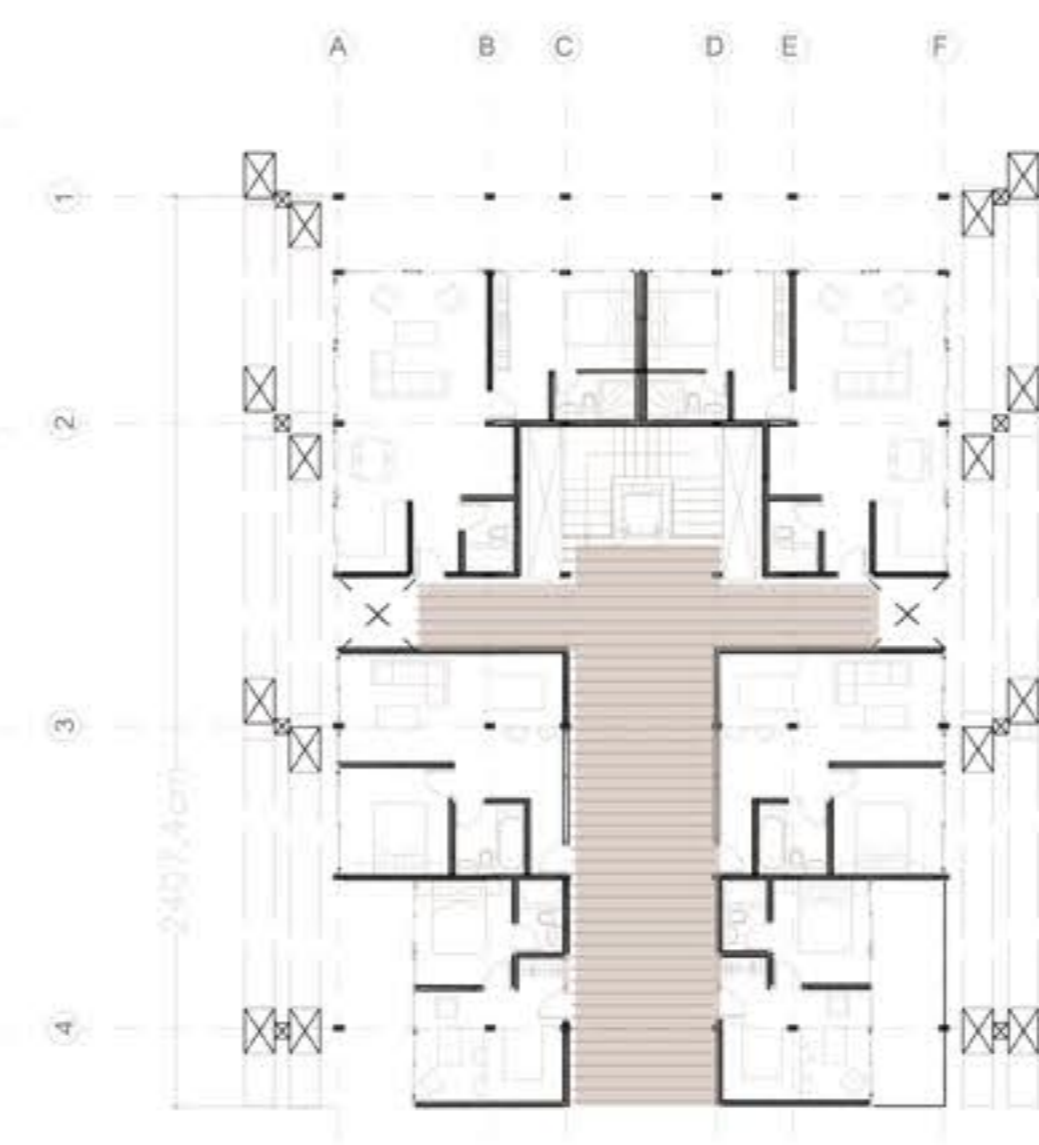
PLANTA 5TO PISO / BLOQUE 1
esc 1:200



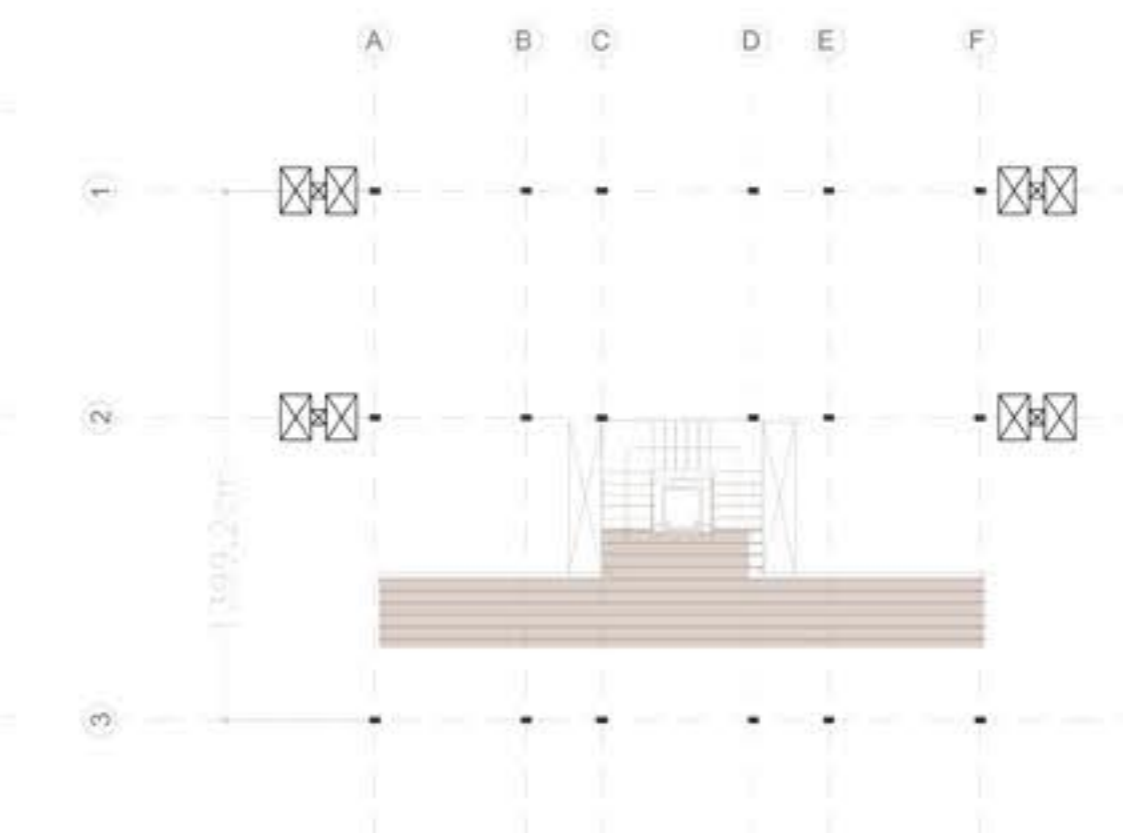
PLANTA 4TO PISO / BLOQUE 1
esc 1:200



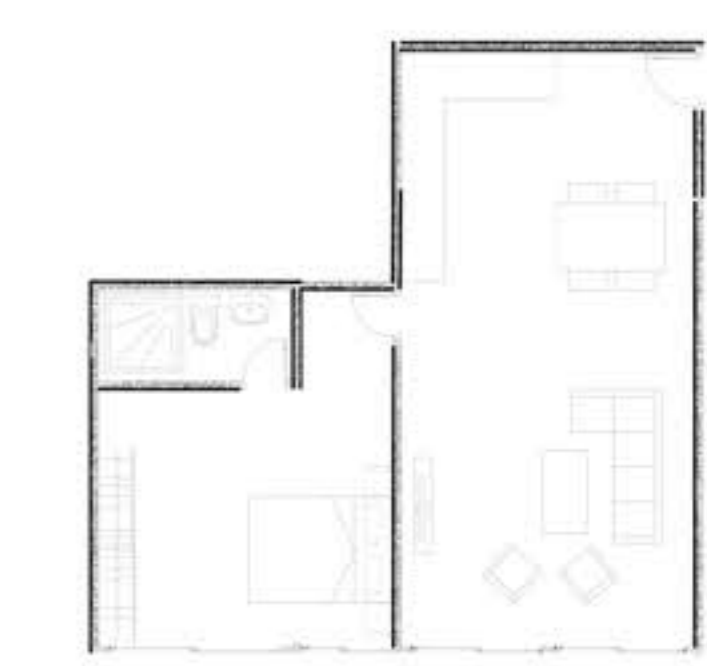
PLANTA 3ER PISO / BLOQUE 1
esc 1:200



PLANTA 2DO PISO / BLOQUE 1
esc 1:200



PLANTA 1ER PISO / BLOQUE 1
esc 1:200



SIMPLE 3
49m2

TIPOLOGIAS
esc 1:100