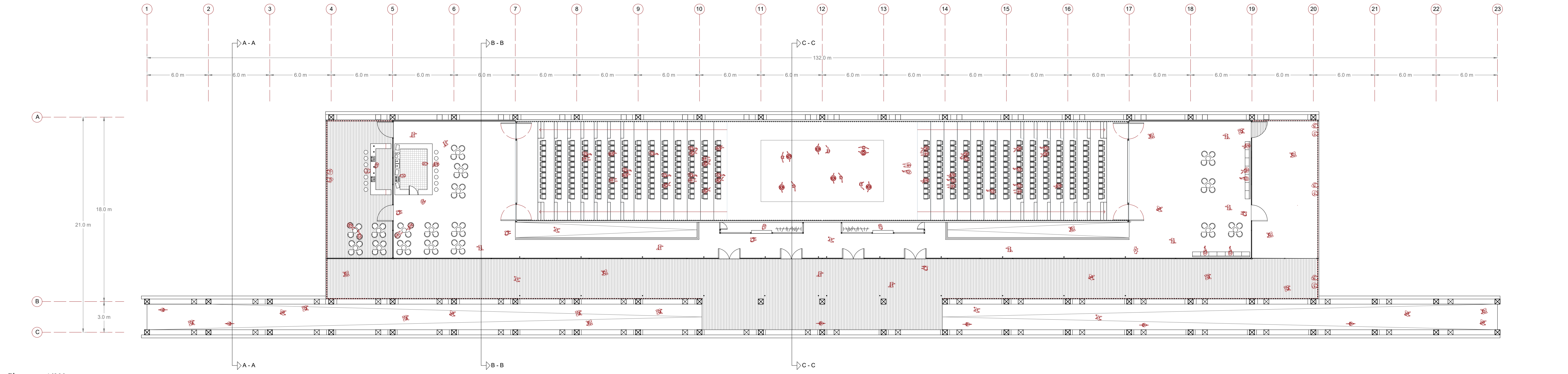
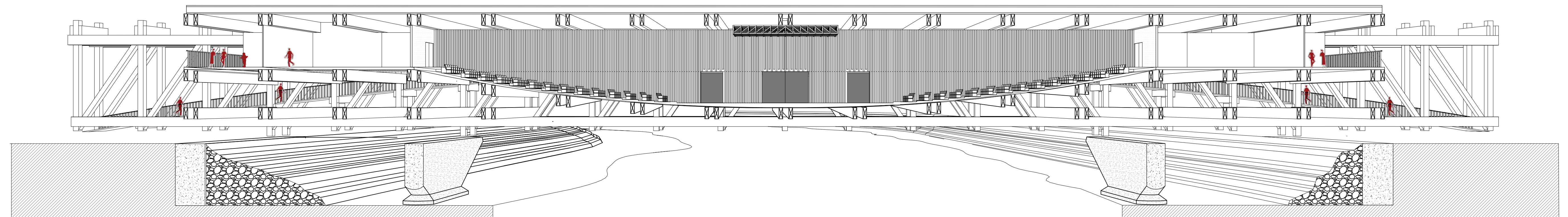


- 1) Cubierta
- 2) Teatro
- 3) Serramiento
- 4) Losa teatro
- 5) Pasarela ascendente
- 6) Vigas de cubierta
- 7) Estructura catenaria

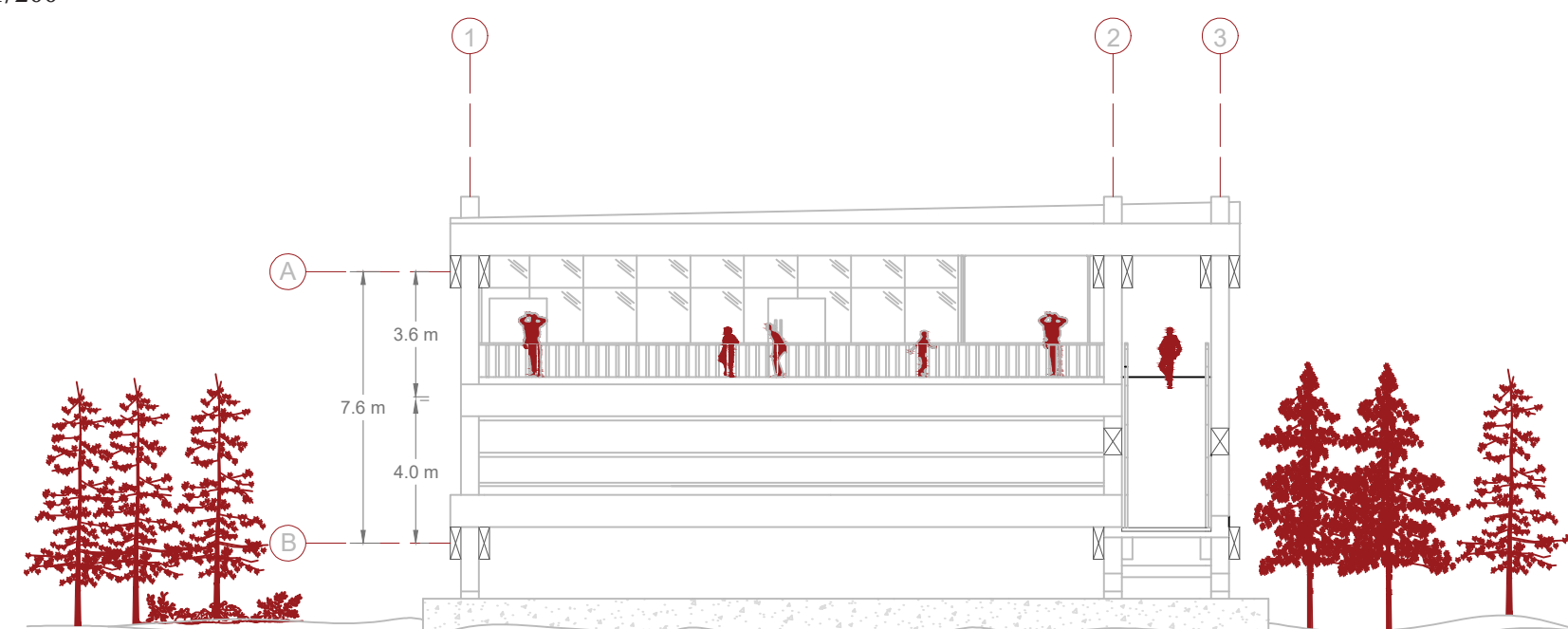
Axonometrica explotada



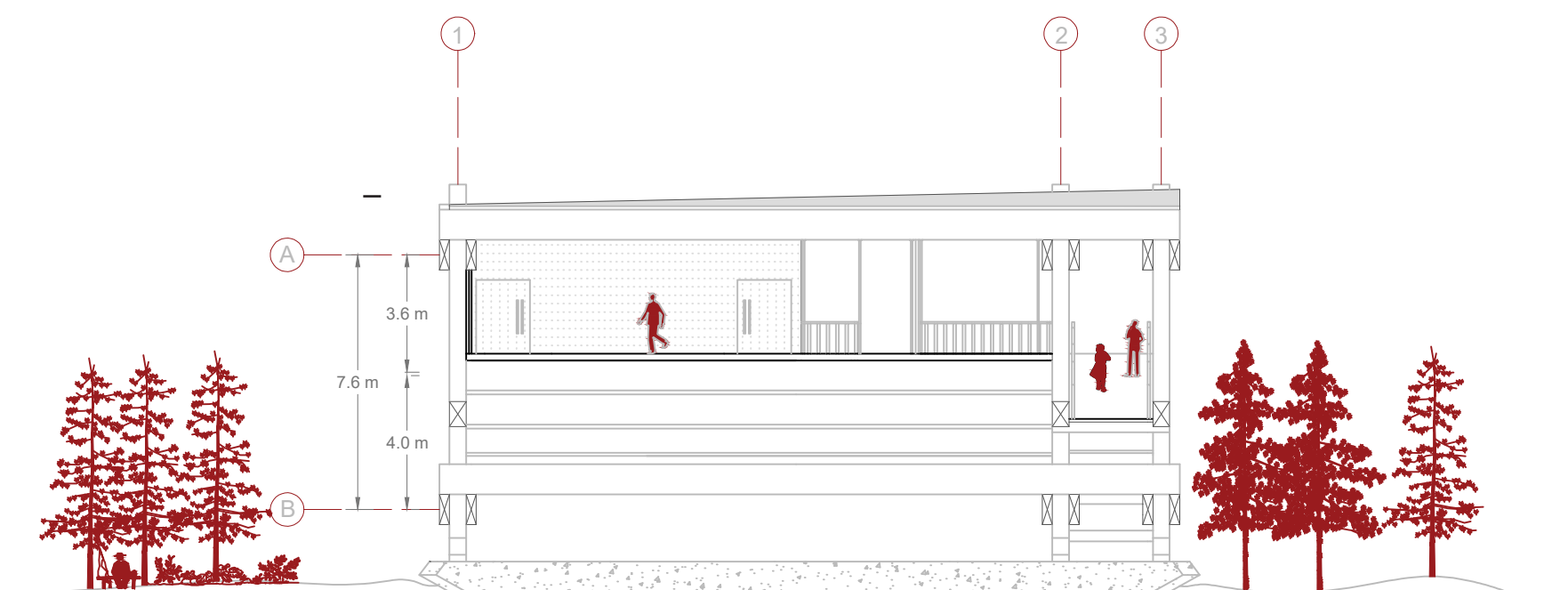
Planta esc. 1/200



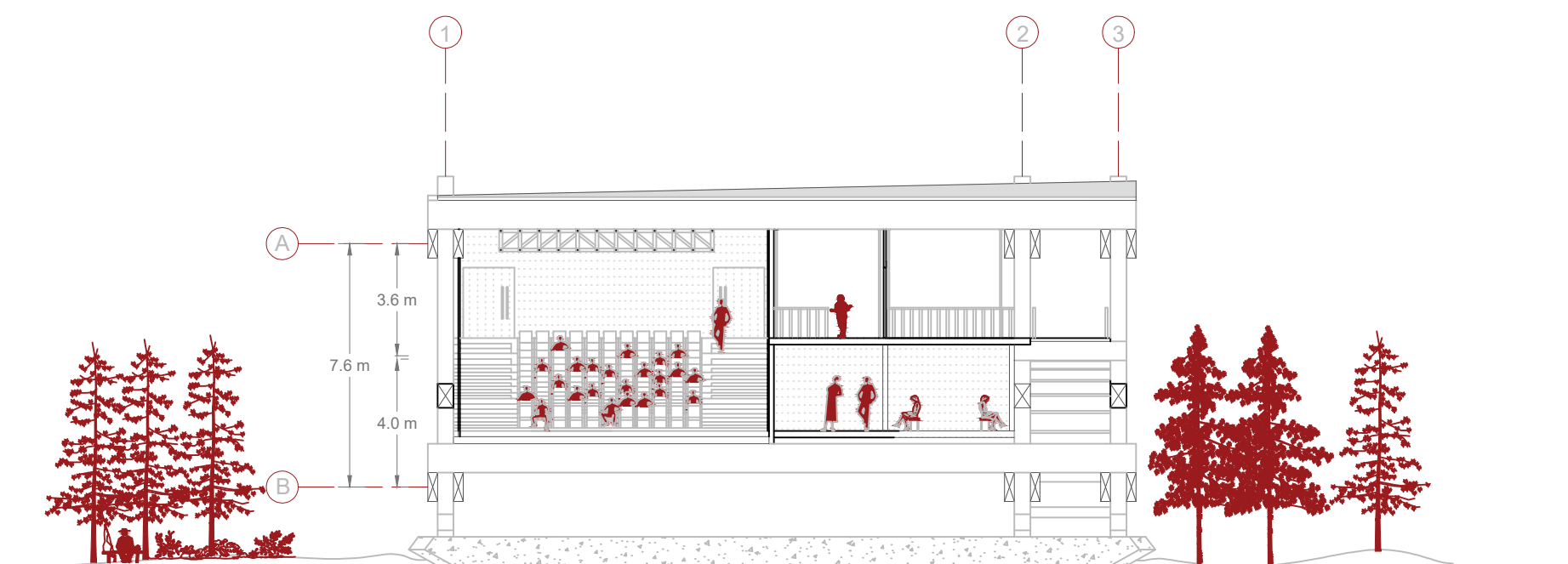
Corte fugado esc. 1/200



Corte A-A esc. 1/200



Corte B-B esc. 1/200



Corte C-C esc. 1/200